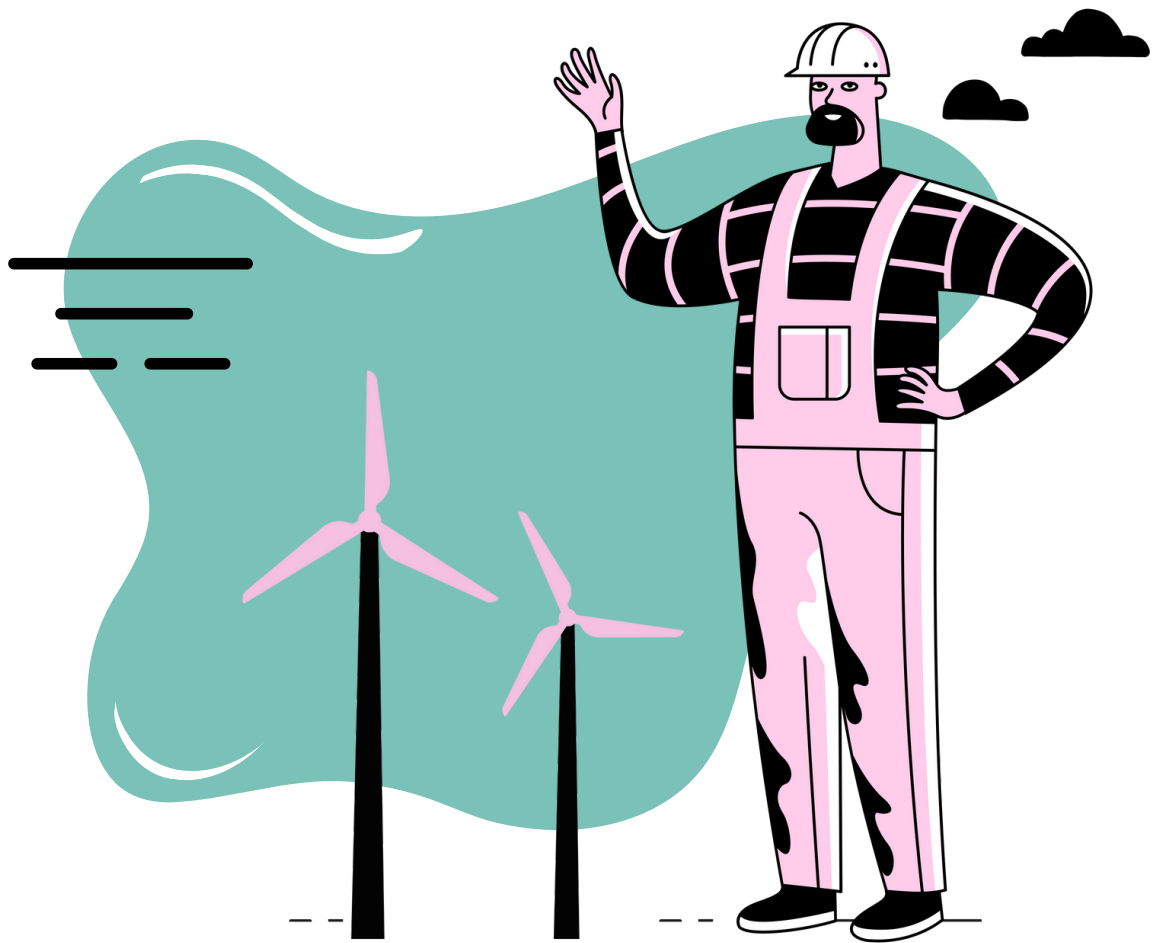




GreenTec

renewable workforce specialists



Powering a **Sustainable Future**

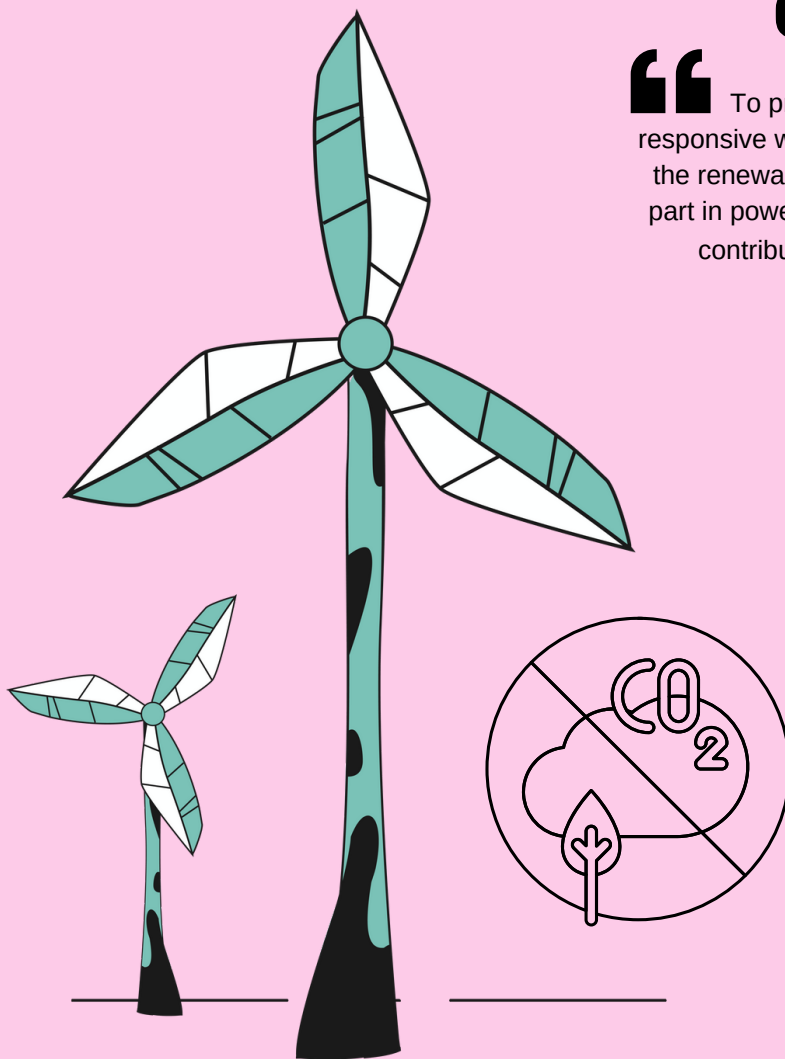
wind • solar • hydroelectricity • maritime • energy storage

Who on earth are GreenTec?

GreenTec are a modern, workforce solutions provider operating on a global scale. Combining innovation and technology with vast people & project knowhow, GreenTec offer a suite of recruitment services specifically tailored for the Renewable Energy industry.

Our mission

“ To provide world-class, strategic & responsive workforce solutions throughout the renewable energy sector. Playing our part in powering a sustainable future and contributing to global carbon neutrality by 2050. ”



Explore our workforce solutions

GreenTec have developed a core suite of high performing, agile workforce solutions, dedicated to the unique requirements of the global renewable energy industry. Encapsulating four core services, our range of solutions are fit for purpose in tackling every facet of modern workforce challenges.



Blue & White Collar Contract Recruitment

Rapid response contingency recruitment for blue & white collar contractors covering the entire project lifecycle



Full Scope Project Solutions

Providing specialist teams for various scopes of work inclusive of Training, Compliance, Payroll, Mob / De-mob, Immigration, Transport, Accommodation and Certified PPE under one solution



White Collar Permanent Recruitment

Offering bespoke contingency recruitment for mid-senior level white collar candidates on a permanent basis



Recruitment Process Outsourced (RPO)

Offering a customised and scalable, fully outsourced solution for supporting all or part of a your workforce hiring needs.

Discover our **available personnel**



Technicians



Supervisors



Site Managers



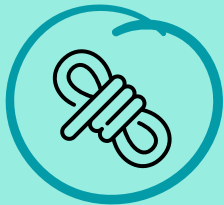
HSE



Quality Inspectors



Client Reps



Riggers



Masters & Vessel Crew



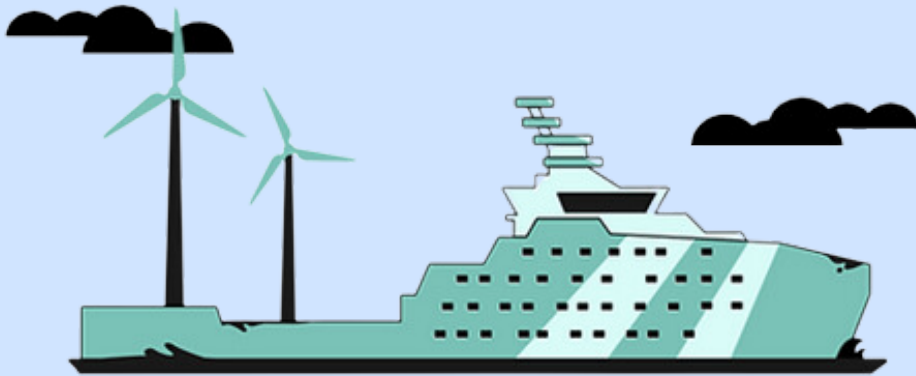
Engineers

Covering all onshore & offshore project scopes across:

WTG Pre-Assembly, Installation, Service, Commissioning, Maintenance, Inspection, Blade Repair, Rope Access, HV, Paint, Balance of Plant, Heavy Lift, Sub-Sea, Marine, Maritime, T&D, Solar, Hydroelectric, Biomass, Energy Storage & Floating Wind

Additional services for seafarers & vessel crew

GreenTec are much more than a “CV sending service” & have developed a robust and effective offering of additional services, complimenting the placement process for seafarers and vessel crew. Take a look at the options below which can be added where and when needed to create a bespoke workforce solution.



International Services

- Seafarer Payroll
- Visa & Work Permit application & advice
- Global mobilisation including flights & hire cars



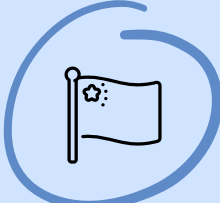
Testing & Certification

- Medical examinations including D&A testing
- English communication testing including Marlin & TSE



PPE & Clothing

- Supply of working clothes & PPE from our dedicated warehouses in Denmark, Poland, Taiwan & UK



Mandatory Documentation

- Renewal of seafarers documentation and training
- Arrange flag state applications

Our values & DNA

GreenTec's company values are the beliefs, philosophies, and key principles that drive our business forward, day by day. Our people are at the very heart of everything we do and developing a workforce that is not only aligned to but invested in our core values, has empowered us to foster a purposeful culture and distinct DNA.

Transparency

We believe transparency increases credibility and accountability. This is absolutely vital to our customers and is essential to us in everything we do.

Integrity

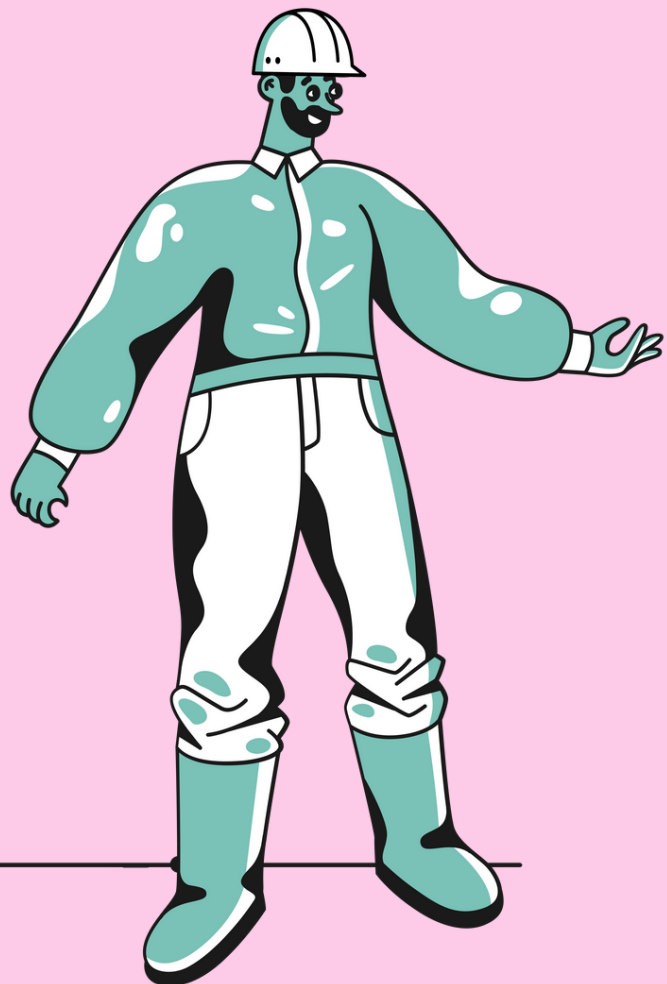
To us, integrity is shown through courage and ownership, doing the right thing in a reliable way. We take pride in our core principals and we are always striving to learn.

Agility

Our organisational agility is our ability to adapt with speed and efficiency, continuing to thrive under the most challenging of circumstances

Excellence

Our number one, non negotiable behaviour. At GreenTec excellence is not the exception, it is the prevailing attitude and approach, setting the bar for all we aim to achieve



We provide solutions on a global scale

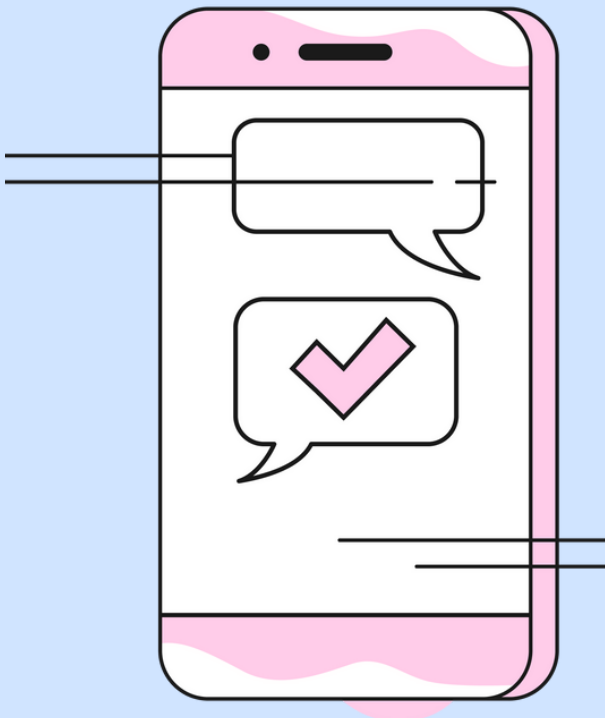
GreenTec offer a truly global provision of services with no location off limits in our desire to serve our client's needs.

With 3 International Hubs, strategically placed to mirror the renewable industries main areas of growth and investment, GreenTec are able to provide more efficient and knowledgeable services across the planet.

Find your nearest Hub from the contacts below and lets chat.



Lets chat. Contact us



UK Hub (Head Office)

Unit B7 , Hamar Close, Tyne Tunnel
Industrial Estate
Tyne & Wear, NE29 7XB
+ 44 7583605276
ukhub@greentecrecruitment.com

European Hub

Navervej 10
7000 Fredericia
Denmark
discover@greentecrecruitment.com

APAC Hub

8F, No. 127, Sec. 1, Fuxing S. Rd.,
Daan Dist., Taipei City 106
Taiwan
discover@greentecrecruitment.com

